

Floor towards attic (uninhabitable) - ddrtn01b-05

floor towards attic (uninhabitable), timber frame construction, not suspended, dry, other surface

Performance rating

Fire protection performance REI 60

maximum span = 5 m; maximum load $E_{d,fi} = 3,66 \text{ kN/m}^2$
 Classified by HFA

Thermal performance U 0.20 W/(m²K)
 Diffusion suitable

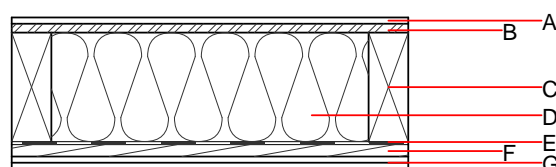
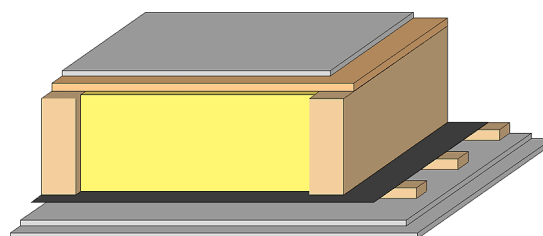
Calculated by HFA

Acoustic performance $R_w (C; C_{tr})$ 48(-4;9) dB
 $L_{n,w} (C_i)$

Assessed by TGM

Mass per unit area m 69.40 kg/m²

Calculation based on GF



Note: e=625

Register of building materials used for this application, cross-section (from outside to inside, dimensions in mm)

	Thickness	Building material	Thermal performance				Reaction to fire EN
			λ	μ min – max	ρ	c	
A	12.5	gypsum plaster board type DF or	0.250	10	800	1.050	A2
A	12.5	gypsum fibre board	0.320	21	1000	1.100	A2
B	18.0	OSB	0.130	200	600	1.700	D
C	220.0	spruce wood floor joists (80/*); e=*	0.120	50	450	1.600	D
D	220.0	cellulose fibre [040; E]	0.040	1 - 2	55	2.000	E
E		vapour barrier sd \geq 15m			1000		
F	24.0	spruce wood cladding with spacing of cladding boards(24/100); a=400	0.120	50	450	1.600	D
G	25.0	gypsum plaster board type DF (2x12,5 mm) or	0.250	10	800	1.050	A2
G	25.0	gypsum fibre board (2x12,5 mm)	0.320	21	1000	1.100	A2

Sustainability rating (per m²)

Database ecoinvent

OL3_{Kon} 17.5

Calculated by HFA

Details of sustainability rating

Database ecoinvent

Lifecycle (Phases)	GWP [kg CO ₂ -e.]	AP [kg SO ₂ -e.]	EP [kg PO ₄ -e.]	ODP [kg R11-e.]	POCP [kg Ethen-e.]	
A1 - A3		0.090	0.038	1,89E-6	0.018	

Lifecycle (Phases)	PERE [MJ]	PERM [MJ]	PERT [MJ]	PENRE [MJ]	PENRM [MJ]	PENRT [MJ]
A1 - A3	98.972	551.163	650.134	317.398	17.469	334.867