

Floor towards attic (uninhabitable) - ddrtn02a-04

floor towards attic (uninhabitable), timber frame construction, not suspended, dry, other surface

Performance rating

Fire protection performance REI 30

maximum span = 5 m; maximum load $E_{d,fi} = 3,66 \text{ kN/m}^2$
Classified by HFA

Thermal performance U 0.20 W/(m²K)
Diffusion suitable

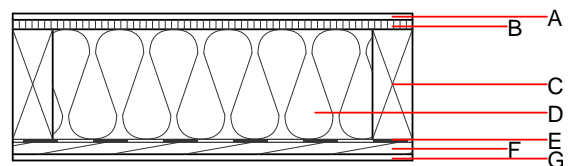
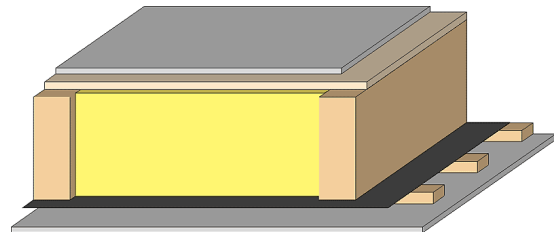
Calculated by HFA

Acoustic performance $R_w (C; C_{tr})$ 46(-3;-8) dB
 $L_{n,w} (C_i)$

Assessed by TGM

Mass per unit area m 57.60 kg/m²

Calculation based on GF



Note: e=625

Register of building materials used for this application, cross-section (from outside to inside, dimensions in mm)

	Thickness	Building material	Thermal performance				Reaction to fire EN
			λ	μ min – max	ρ	c	
A	12.5	gypsum plaster board type DF or	0.250	10	800	1.050	A2
A	12.5	gypsum fibre board	0.320	21	1000	1.100	A2
B	19.0	particleboard	0.130	50 - 100	700	1.700	D
C	220.0	spruce wood floor joists (80/*); e= *	0.120	50	450	1.600	D
D	220.0	mineral wool [038; ≥33; ≥1000°C]	0.038	1	33	1.030	A1
E		vapour barrier sd≥ 8m			1000		
F	24.0	spruce wood cladding with spacing of cladding boards(24/100); a=400	0.120	50	450	1.600	D
G	12.5	gypsum plaster board type DF or	0.250	10	800	1.050	A2
G	12.5	gypsum fibre board	0.320	21	1000	1.100	A2

Sustainability rating (per m²)

Database ecoinvent

OL3_{Kon} 31.4

Calculated by HFA

Details of sustainability rating

Database ecoinvent

Lifecycle (Phases)	GWP [kg CO ₂ -e.]	AP [kg SO ₂ -e.]	EP [kg PO ₄ -e.]	ODP [kg R11-e.]	POCP [kg Ethen-e.]	
A1 - A3		0.145	0.048	1,70E-6	0.055	

Lifecycle (Phases)	PERE [MJ]	PERM [MJ]	PERT [MJ]	PENRE [MJ]	PENRM [MJ]	PENRT [MJ]
A1 - A3	64.575	473.735	538.310	422.540	33.674	456.214