

## Floor towards attic (uninhabitable) - ddrtn02b-03

floor towards attic (uninhabitable), timber frame construction, not suspended, dry, other surface

### Performance rating

**Fire protection performance** REI 60

maximum span = 5 m; maximum load  $E_{d,fi} = 3,66 \text{ kN/m}^2$   
 Classified by HFA

**Thermal performance** U 0.19 W/(m<sup>2</sup>K)  
 Diffusion suitable

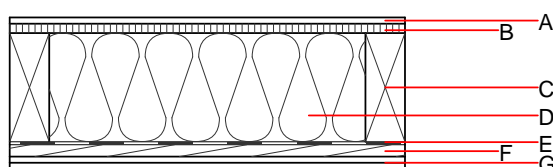
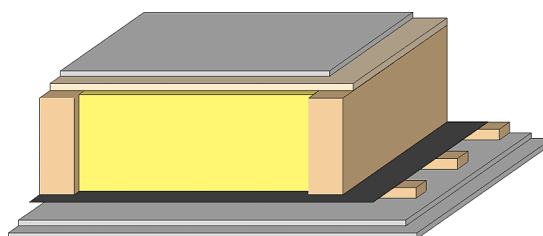
Calculated by HFA

**Acoustic performance**  $R_w (C; C_{tr})$  48(-3;-8) dB  
 $L_{n,w} (C_i)$

Assessed by TGM

**Mass per unit area** m 70.90 kg/m<sup>2</sup>

Calculation based on GF



Note: e=625

### Register of building materials used for this application, cross-section (from outside to inside, dimensions in mm)

	Thickness	Building material	Thermal performance				Reaction to fire EN
			$\lambda$	$\mu$ min – max	$\rho$	c	
A	12.5	gypsum plaster board type DF or	0.250	10	800	1.050	A2
A	12.5	gypsum fibre board	0.320	21	1000	1.100	A2
B	19.0	particleboard	0.130	50 - 100	700	1.700	D
C	220.0	spruce wood floor joists (80/*); e=*	0.120	50	450	1.600	D
D	220.0	mineral wool [035; 50; <1000°C]	0.035	1	50	1.030	A1
E		vapour barrier sd≥ 8m			1000		
F	24.0	spruce wood cladding with spacing of cladding boards(24/100); a=400	0.120	50	450	1.600	D
G	25.0	gypsum plaster board type DF (2x12,5 mm) or	0.250	10	800	1.050	A2
G	25.0	gypsum fibre board (2x12,5 mm)	0.320	21	1000	1.100	A2

### Sustainability rating (per m<sup>2</sup>)

#### Database ecoinvent

OL3<sub>Kon</sub> 51.6

Calculated by HFA

## Details of sustainability rating

### Database ecoinvent

Lifecycle (Phases)	GWP [kg CO <sub>2</sub> -e.]	AP [kg SO <sub>2</sub> -e.]	EP [kg PO <sub>4</sub> -e.]	ODP [kg R11-e.]	POCP [kg Ethen-e.]	
A1 - A3		0.204	0.093	3,93E-6	0.033	

Lifecycle (Phases)	PERE [MJ]	PERM [MJ]	PERT [MJ]	PENRE [MJ]	PENRM [MJ]	PENRT [MJ]
A1 - A3	80.786	473.735	554.522	735.744	33.674	769.418