

**Floor towards attic (uninhabitable) - ddrtxn03a-03**

floor towards attic (uninhabitable), timber frame construction, not suspended, dry, other surface

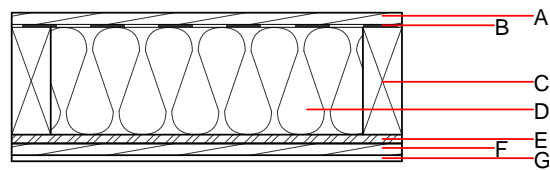
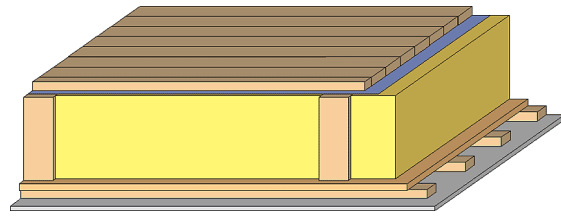
**Performance rating**

**Fire protection performance** REI 30  
 maximum span = 5 m; maximum load  $E_{d,fi} = 3,66 \text{ kN/m}^2$   
 Classified by HFA

**Thermal performance** U 0.18  $\text{W}/(\text{m}^2\text{K})$   
**Diffusion** suitable  
 Calculated by HFA

**Acoustic performance**  $R_w (C;C_{tr})$  42(-2;-6) dB  
 $L_{n,w} (C_i)$

**Mass per unit area** m 60.50  $\text{kg}/\text{m}^2$   
 Calculation based on gypsum plaster board type DF



Note: e=625

**Register of building materials used for this application, cross-section** (from outside to inside, dimensions in mm)

	Thickness	Building material	Thermal performance				Reaction to fire EN
			$\lambda$	$\mu$ min – max	$\rho$	c	
A	24.0	planking spruce wood	0.120	50	450	1.600	D
B		wind barrier				1000	
C	220.0	construction timber (80/...; e=*)	0.120	50	450	1.600	D
D	220.0	mineral wool [035; 50; <1000°C]	0.035	1	50	1.030	A1
E	18.0	OSB (sealed with airtight tape)	0.130	200	600	1.700	D
F	24.0	spruce wood cladding with spacing of cladding boards(24/100); a=400	0.120	50	450	1.600	D
G	12.5	gypsum plaster board type DF or	0.250	10	800	1.050	A2
G	12.5	gypsum fibre board	0.320	21	1000	1.100	A2

**Sustainability rating** (per  $\text{m}^2$ )

**Database ecoinvent**

$OI3_{kon}$  45.5

Calculated by HFA

### Details of sustainability rating

#### Database ecoinvent

Lifecycle (Phases)	GWP [kg CO <sub>2</sub> -e.]	AP [kg SO <sub>2</sub> -e.]	EP [kg PO <sub>4</sub> -e.]	ODP [kg R11-e.]	POCP [kg Ethen-e.]	
A1 - A3		0.205	0.093	3,67E-6	0.034	

Lifecycle (Phases)	PERE [MJ]	PERM [MJ]	PERT [MJ]	PENRE [MJ]	PENRM [MJ]	PENRT [MJ]
A1 - A3	119.027	634.533	753.560	652.344	19.412	671.756