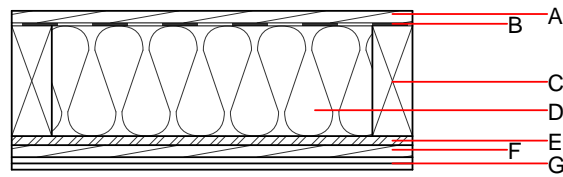
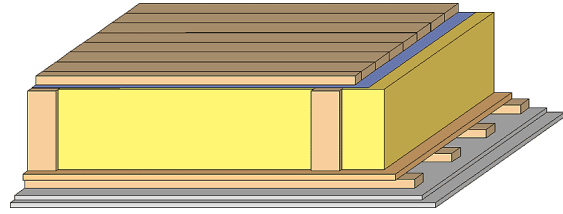


**Floor towards attic (uninhabitable) - ddrtxn03b-02**

floor towards attic (uninhabitable), timber frame construction, not suspended, dry, other surface

**Performance rating**

<b>Fire protection performance</b>	REI	60
maximum span = 5 m; maximum load $E_{d,fi} = 3,66 \text{ kN/m}^2$ Classified by HFA		
<b>Thermal performance</b>	U Diffusion	0.18 $\text{W}/(\text{m}^2\text{K})$ suitable
Calculated by HFA		
<b>Acoustic performance</b>	$R_w (C;C_{tr})$ $L_{n,w} (C_i)$	43(-2;-6) dB
Assessed by TGM		
<b>Mass per unit area</b>	m	65.60 $\text{kg}/\text{m}^2$
Calculation based on gypsum plaster board type DF		



Note: e=625

**Register of building materials used for this application, cross-section** (from outside to inside, dimensions in mm)

	Thickness	Building material	Thermal performance				Reaction to fire EN
			$\lambda$	$\mu$ min – max	$\rho$	c	
A	24.0	planking spruce wood	0.120	50	450	1.600	D
B		wind barrier			1000		
C	240.0	construction timber (80/..; e=*)	0.120	50	450	1.600	D
D	240.0	mineral wool [040; $\geq 16$ ; $< 1000^\circ\text{C}$ ]	0.040	1	16	1.030	A1
E	18.0	OSB (sealed with airtight tape)	0.130	200	600	1.700	D
F	24.0	spruce wood cladding with spacing of cladding boards(24/100); a=400	0.120	50	450	1.600	D
G	25.0	gypsum plaster board type DF (2x12,5 mm) or	0.250	10	800	1.050	A2
G	25.0	gypsum fibre board (2x12,5 mm)	0.320	21	1000	1.100	A2

**Sustainability rating** (per  $\text{m}^2$ )

**Database ecoinvent**

$\text{O13}_{\text{Kon}}$	25.1
Calculated by HFA	

**Details of sustainability rating**

Database ecoinvent

Lifecycle (Phases)	GWP [kg CO <sub>2</sub> -e.]	AP [kg SO <sub>2</sub> -e.]	EP [kg PO <sub>4</sub> -e.]	ODP [kg R11-e.]	POCP [kg Ethen-e.]	
A1 - A3		0.125	0.056	2,44E-6	0.026	

Lifecycle (Phases)	PERE [MJ]	PERM [MJ]	PERT [MJ]	PENRE [MJ]	PENRM [MJ]	PENRT [MJ]
A1 - A3	112.538	655.496	768.035	428.640	19.412	448.053