

Floor towards attic (uninhabitable) - ddrtn04a-06

floor towards attic (uninhabitable), timber frame construction, not suspended, dry, other surface

Performance rating

Fire protection performance REI 30

maximum span = 5 m; maximum load $E_{d,fi} = 3,66 \text{ kN/m}^2$
 Classified by HFA

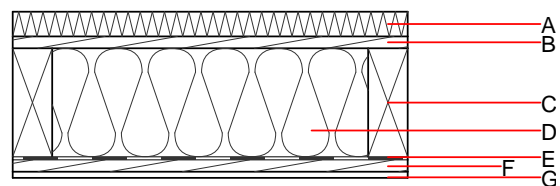
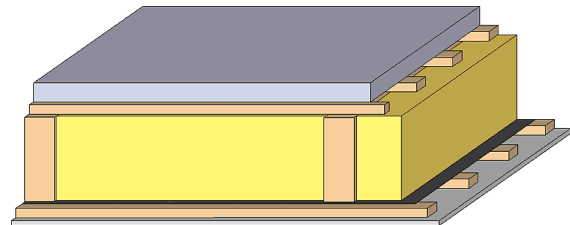
Thermal performance U Diffusion 0.20 W/(m²K)
 suitable

Calculated by HFA

Acoustic performance $R_w (C; C_{tr})$ 42(-3; 7) dB
 $L_{n,w} (C_i)$

Mass per unit area m 66.40 kg/m²

Calculation based on gypsum plaster board type DF



Note: e=625

Register of building materials used for this application, cross-section (from outside to inside, dimensions in mm)

	Thickness	Building material	Thermal performance				Reaction to fire EN
			λ	μ min – max	ρ	c	
A	50.0	Magnesite-bound lightweight wood wool board	0.120	2 - 5	700	1.400	
B	24.0	spruce wood cladding with spacing of cladding boards(24/100); a=400	0.120	50	450	1.600	D
C	220.0	construction timber (80/...; e=*)	0.120	50	450	1.600	D
D	220.0	sheep wool [0,041; R=16]	0.041	1	16	1.720	E
E		vapour barrier sd≥ 2m			1000		
F	24.0	spruce wood cladding with spacing of cladding boards(24/100); a=400	0.120	50	450	1.600	D
G	12.5	gypsum plaster board type DF or	0.250	10	800	1.050	A2
G	12.5	gypsum fibre board	0.320	21	1000	1.100	A2

Sustainability rating (per m²)

Database ecoinvent

013_{kon} 12.7

Calculated by HFA

Details of sustainability rating

Database ecoinvent

Lifecycle (Phases)	GWP [kg CO ₂ -e.]	AP [kg SO ₂ -e.]	EP [kg PO ₄ -e.]	ODP [kg R11-e.]	POCP [kg Ethen-e.]	
A1 - A3		0.062	0.025	1,59E-6	0.016	

Lifecycle (Phases)	PERE [MJ]	PERM [MJ]	PERT [MJ]	PENRE [MJ]	PENRM [MJ]	PENRT [MJ]
A1 - A3	72.686	518.003	590.688	262.867	5.150	268.017