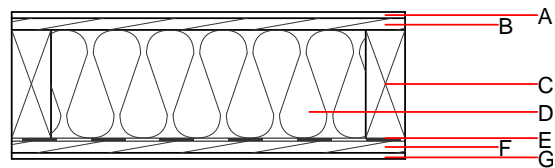
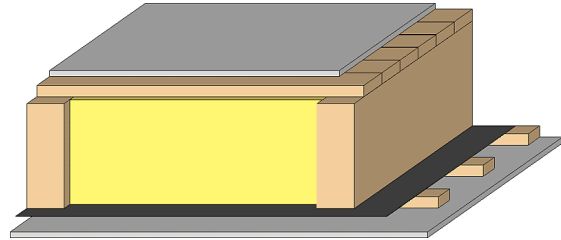


Floor towards attic (uninhabitable) - ddrtxn05a-03

floor towards attic (uninhabitable), timber frame construction, not suspended, dry, Gipsplatte

Performance rating

Fire protection performance	REI	30
maximum span = 5 m; maximum load $E_{d,fi} = 3,66 \text{ kN/m}^2$ Classified by HFA		
Thermal performance	U Diffusion	0.19 $\text{W}/(\text{m}^2\text{K})$ suitable
Calculated by HFA		
Acoustic performance	$R_w (C;C_{tr})$ $L_{n,w} (C_i)$	47(-3;-8) dB
Assessed by TGM		
Mass per unit area	m	58.80 kg/m^2
Calculation based on GF		



Note: e=625

Register of building materials used for this application, cross-section (from outside to inside, dimensions in mm)

	Thickness	Building material	Thermal performance				Reaction to fire EN
			λ	μ min – max	ρ	c	
A	12.5	gypsum plaster board type DF or	0.250	10	800	1.050	A2
A	12.5	gypsum fibre board	0.320	21	1000	1.100	A2
B	24.0	planking spruce wood	0.120	50	450	1.600	D
C	220.0	spruce wood floor joists (80/*); e=*	0.120	50	450	1.600	D
D	220.0	mineral wool [035; 50; <1000°C]	0.035	1	50	1.030	A1
E		vapour barrier $s_d \geq 6\text{m}$			1000		
F	24.0	spruce wood cladding with spacing of cladding boards(24/100); a=400	0.120	50	450	1.600	D
G	12.5	gypsum plaster board type DF or	0.250	10	800	1.050	A2
G	12.5	gypsum fibre board	0.320	21	1000	1.100	A2

Sustainability rating (per m^2)

Database ecoinvent

$OI3_{Kon}$ 42.8

Calculated by HFA

Details of sustainability rating

Database ecoinvent

Lifecycle (Phases)	GWP [kg CO ₂ -e.]	AP [kg SO ₂ -e.]	EP [kg PO ₄ -e.]	ODP [kg R11-e.]	POCP [kg Ethen-e.]	
A1 - A3		0.186	0.085	3,49E-6	0.030	

Lifecycle (Phases)	PERE [MJ]	PERM [MJ]	PERT [MJ]	PENRE [MJ]	PENRM [MJ]	PENRT [MJ]
A1 - A3	102.635	476.272	578.907	603.717	4.459	608.176