

Flat roof - fdrhbi07a-06

flat roof, timber frame construction, ventilated, with dry lining, not suspended, other surface

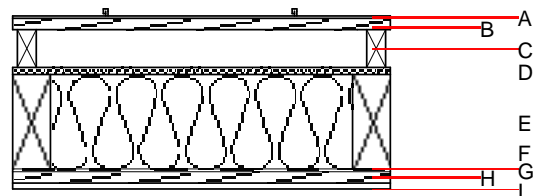
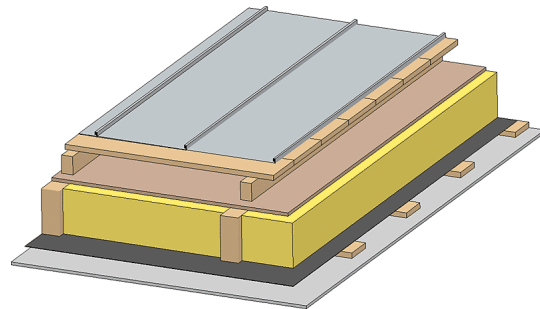
Performance rating

Fire protection performance REI 30
maximum span = 5 m; maximum load $E_{d,fi} = 3,66 \text{ kN/m}^2$
Classified by HFA

Thermal performance U Diffusion 0.24 $\text{W/(m}^2\text{K)}$
suitable
Calculated by HFA

Acoustic performance $R_w (C; C_{tr})$ 48(-4;-9) dB
 $L_{n,w} (C_i)$
Assessed by TGM

Mass per unit area m 35.00 kg/m^2
Calculation based on gypsum plaster board type DF



Note: The design of the under-roof construction and of the counter-battens have to be specified according to the roof pitch and the national requirements.

Register of building materials used for this application, cross-section (from outside to inside, dimensions in mm)

	Thickness	Building material	Thermal performance				Reaction to fire EN
			λ	$\mu \text{ min} - \text{max}$	ρ	c	
A		Plastic roofing membrane or					E
A		sheet metal roofing			7800		A1
B	24.0	spruce wood closed cladding without spacing of cladding boards	0.120	50	450	1.600	D
C	80.0	spruce wood counter battens (ventilation)	0.120	50	450	1.600	D
D		sarking membrane $s_d \leq 0,3\text{m}$			1000		E
D	15.0	fibreboard (MDF)	0.140	11	600	1.700	D
E	200.0	construction timber (80/...; e=800)	0.120	50	450	1.600	D
F	200.0	sheep wool [0,041; R=26]	0.041	1	30	1.720	E
G		vapour barrier $s_d \geq 1\text{m}$			1000		
H	24.0	spruce wood cladding with spacing of cladding boards(24/100); a=400	0.120	50	450	1.600	D
I	12.5	gypsum plaster board type DF or	0.250	10	800	1.050	A2
I	12.5	gypsum fibre board	0.320	21	1000	1.100	A2

Sustainability rating (per m^2)

Database ecoinvent

OL3_{Kon} 27.7

Calculated by HFA

Details of sustainability rating

Database ecoinvent

Lifecycle (Phases)	GWP [kg CO ₂ -e.]	AP [kg SO ₂ -e.]	EP [kg PO ₄ -e.]	ODP [kg R11-e.]	POCP [kg Ethen-e.]	
A1 - A3		0.128	0.060	2,18E-6	0.027	

Lifecycle (Phases)	PERE [MJ]	PERM [MJ]	PERT [MJ]	PENRE [MJ]	PENRM [MJ]	PENRT [MJ]
A1 - A3	95.069	716.218	811.287	450.447	30.842	481.289