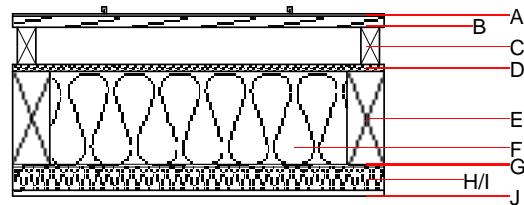
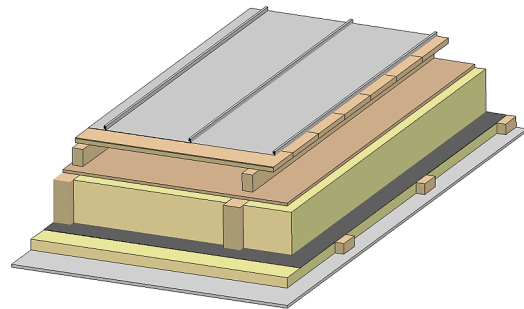


Flat roof - fdrhbi08a-06

flat roof, timber frame construction, ventilated, with dry lining, not suspended, other surface

Performance rating

Fire protection performance	REI	30
maximum span = 5 m; maximum load $E_{d,fi} = 3,66 \text{ kN/m}^2$ Classified by HFA		
Thermal performance	U Diffusion	0.18 $\text{W}/(\text{m}^2\text{K})$ suitable
Calculated by HFA		
Acoustic performance	R_w (C;C _{tr}) $L_{n,w}$ (C _i)	49(-3;-8) dB
Assessed by TGM		
Mass per unit area	m	46.20 kg/m^2
Calculation based on GF		



Note: The design of the under-roof construction and of the counter-battens have to be specified according to the roof pitch and the national requirements.

Register of building materials used for this application, cross-section (from outside to inside, dimensions in mm)

	Thickness	Building material	Thermal performance				Reaction to fire EN
			λ	μ min – max	ρ	c	
A		Plastic roofing membrane or					E
A		sheet metal roofing			7800		A1
B	24.0	spruce wood closed cladding without spacing of cladding boards	0.120	50	450	1.600	D
C	80.0	spruce wood counter battens (ventilation)	0.120	50	450	1.600	D
D		sarking membrane $s_d \leq 0,3\text{m}$			1000		E
D	15.0	fibreboard (MDF)	0.140	11	600	1.700	D
E	200.0	construction timber (80/*; e=800)	0.120	50	450	1.600	D
F	200.0	cellulose fibre [040; E]	0.040	1 - 2	55	2.000	E
G		vapour barrier $s_d \geq 1\text{m}$			1000		
H	50.0	spruce wood cross battens (50/80;a=400)	0.120	50	450	1.600	D
I	50.0	cellulose fibre [040; E] or without insulation in type 01	0.040	1 - 2	55	2.000	E
J	12.5	gypsum fibre board or	0.320	21	1000	1.100	A2
J	12.5	gypsum plaster board type DF	0.250	10	800	1.050	A2

Sustainability rating (per m^2)

Database ecoinvent

$O13_{Kon}$ 28.1

Calculated by HFA

Details of sustainability rating

Database ecoinvent

Lifecycle (Phases)	GWP [kg CO ₂ -e.]	AP [kg SO ₂ -e.]	EP [kg PO ₄ -e.]	ODP [kg R11-e.]	POCP [kg Ethen-e.]	
A1 - A3		0.149	0.068	2,01E-6	0.028	

Lifecycle (Phases)	PERE [MJ]	PERM [MJ]	PERT [MJ]	PENRE [MJ]	PENRM [MJ]	PENRT [MJ]
A1 - A3	109.504	761.826	871.331	433.606	29.762	463.368