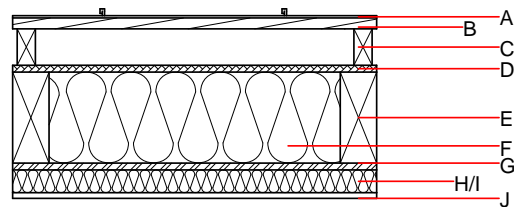
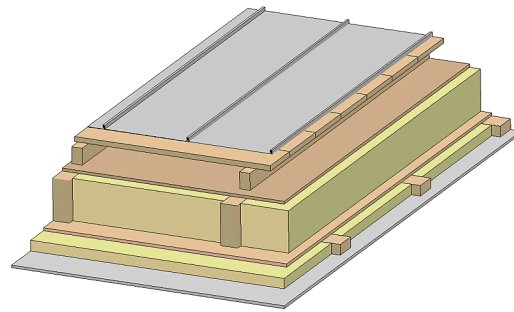


Flat roof - fdrhbi10a-00

flat roof, timber frame construction, ventilated, with dry lining, not suspended, other surface

Performance rating

Fire protection performance	REI	30
maximum span = 5 m; maximum load $E_{d,fi} = 2,62 \text{ kN/m}^2$ Classified by HFA		
Thermal performance	U Diffusion	0.18 $\text{W}/(\text{m}^2\text{K})$ suitable
Calculated by HFA		
Acoustic performance	R_w (C;C _{tr}) $L_{n,w}$ (C)	47(-3;-7) dB
Assessed by TGM		
Mass per unit area	m	47.30 kg/m^2
Calculation based on GF		



Note: The design of the under-roof construction and of the counter-battens have to be specified according to the roof pitch and the national requirements.

Register of building materials used for this application, cross-section (from outside to inside, dimensions in mm)

Thickness	Building material	Thermal performance				Reaction to fire EN
		λ	μ min – max	ρ	c	
A	sheet metal roofing or			7800		A1
A	Plastic roofing membrane					E
B	24.0 spruce wood closed cladding without spacing of cladding boards	0.120	50	450	1.600	D
C	80.0 spruce wood counter battens (ventilation)	0.120	50	450	1.600	D
D	sarking membrane $s_d \leq 0,3\text{m}$			1000		E
D	15.0 fibreboard (MDF)	0.140	11	600	1.700	D
E	200.0 construction timber (80/..; e=800)	0.120	50	450	1.600	D
F	200.0 mineral wool [040; ≥ 16 ; $< 1000^\circ\text{C}$]	0.040	1	16	1.030	A1
G	15.0 OSB (sealed with airtight tape)	0.130	200	600	1.700	D
H	50.0 spruce wood cross battens (50/80;a=400)	0.120	50	450	1.600	D
I	50.0 mineral wool [040; ≥ 16 ; $< 1000^\circ\text{C}$]	0.040	1	16	1.030	A1
J	12.5 gypsum plaster board type DF or	0.250	10	800	1.050	A2
J	12.5 gypsum fibre board	0.320	21	1000	1.100	A2

Sustainability rating (per m^2)

Database ecoinvent

$OI3_{kon}$ 39.3

Calculated by HFA

Details of sustainability rating

Databaseecoinvent

Lifecycle (Phases)	GWP [kg CO ₂ -e.]	AP [kg SO ₂ -e.]	EP [kg PO ₄ -e.]	ODP [kg R11-e.]	POCP [kg Ethen-e.]	
A1 - A3		0.187	0.086	2,84E-6	0.035	

Lifecycle (Phases)	PERE [MJ]	PERM [MJ]	PERT [MJ]	PENRE [MJ]	PENRM [MJ]	PENRT [MJ]
A1 - A3	133.529	784.990	918.520	593.765	35.294	629.059