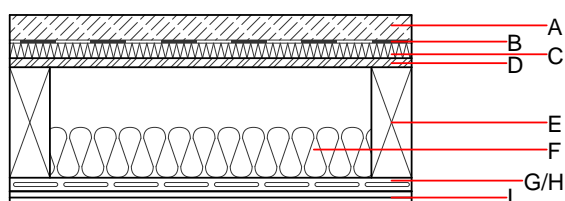
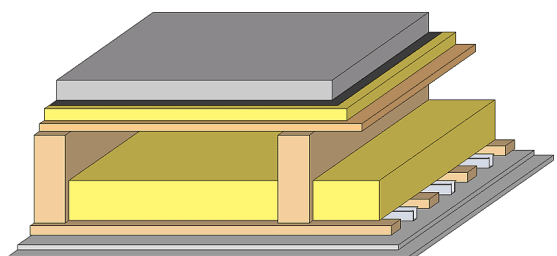


Intermediate floor - gdrnxa01b-06

intermediate floor, timber frame construction, suspended, wet, without filling, other surface

Performance rating

Fire protection performance	REI	60
maximum span = 5 m; maximum load $E_{d,fi} = 3,66 \text{ kN/m}^2$ Classified by HFA		
Thermal performance	U Diffusion	0.28 W/(m ² K) suitable
Calculated by HFA		
Acoustic performance	$R_w (C; C_{tr})$ $L_{n,w} (C_i)$	66(-1;-6) dB 51(0)
Assessed by TGM		
Mass per unit area	m	152.40 kg/m ²
Calculation based on GF		



Note: e=625

Register of building materials used for this application, cross-section (from outside to inside, dimensions in mm)

	Thickness	Building material	Thermal performance				Reaction to fire EN
			λ	μ min – max	ρ	c	
A	50.0	anhydrite screed or cement screed	0.700	10	2200	1.300	A1
B		plastic separation layer	0.200	100000	1400	1.400	E
C	30.0	impact sound absorbing subflooring MW-T	0.035	1	68	1.030	A1
D	18.0	OSB	0.130	200	600	1.700	D
E	220.0	construction timber (80/...; e=*)	0.120	50	450	1.600	D
F	100.0	sheep wool [0,041; R=16]	0.041	1	16	1.720	E
G	24.0	spruce wood cladding with spacing of cladding boards(24/100); a=400	0.120	50	450	1.600	D
H	27.0	resilient channel (placed between open formwork)	0.156				
I	25.0	gypsum plaster board type DF (2x12,5 mm) or	0.250	10	800	1.050	A2
I	25.0	gypsum fibre board (2x12,5 mm)	0.320	21	1000	1.100	A2

Sustainability rating (per m²)

Database ecoinvent

O13_{Kon} 36.2

Calculated by HFA

Details of sustainability rating

Database ecoinvent

Lifecycle (Phases)	GWP [kg CO ₂ -e.]	AP [kg SO ₂ -e.]	EP [kg PO ₄ -e.]	ODP [kg R11-e.]	POCP [kg Ethen-e.]	
A1 - A3		0.140	0.069	2,69E-6	0.026	

Lifecycle (Phases)	PERE [MJ]	PERM [MJ]	PERT [MJ]	PENRE [MJ]	PENRM [MJ]	PENRT [MJ]
A1 - A3	104.667	468.017	572.684	532.204	17.145	549.350