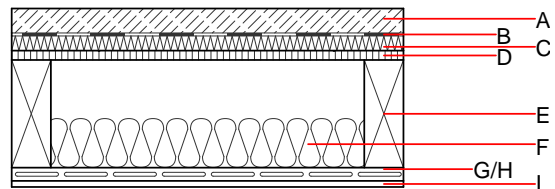
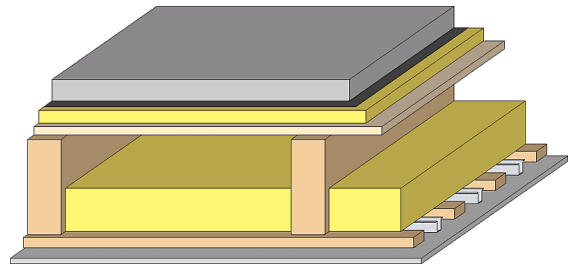


### Intermediate floor - gdrnxa04a-04

intermediate floor, timber frame construction, suspended, wet, without filling, other surface

#### Performance rating

<b>Fire protection performance</b>	REI	30
maximum span = 5 m; maximum load $E_{d,fi} = 3,66 \text{ kN/m}^2$ Classified by HFA		
<b>Thermal performance</b>	U Diffusion	0.27 $\text{W}/(\text{m}^2\text{K})$ suitable
Calculated by HFA		
<b>Acoustic performance</b>	$R_w (C;C_{tr})$ $L_{n,w} (C_i)$	66(-1;-6) dB 52(0)
Assessed by TGM		
<b>Mass per unit area</b>	m	145.50 $\text{kg}/\text{m}^2$
Calculation based on GF		



Note: e=625;

#### Register of building materials used for this application, cross-section (from outside to inside, dimensions in mm)

	Thickness	Building material	Thermal performance				Reaction to fire EN
			$\lambda$	$\mu$ min – max	$\rho$	c	
A	50.0	anhydrite screed or cement screed	0.700	10	2200	1.300	A1
B		plastic separation layer	0.200	100000	1400	1.400	E
C	30.0	impact sound absorbing subflooring MW-T	0.035	1	68	1.030	A1
D	19.0	particleboard	0.130	50 - 100	700	1.700	D
E	220.0	construction timber (80/...; e=*)	0.120	50	450	1.600	D
F	100.0	mineral wool [038; ≥33; ≥1000°C]	0.038	1	33	1.030	A1
G	24.0	spruce wood cladding with spacing of cladding boards(24/100); a=400	0.120	50	450	1.600	D
H	27.0	resilient channel (placed between open formwork)	0.156				
I	12.5	gypsum plaster board type DF or	0.250	10	800	1.050	A2
I	12.5	gypsum fibre board	0.320	21	1000	1.100	A2

#### Sustainability rating (per $\text{m}^2$ )

##### Database ecoinvent

$O13_{kon}$  42.7

Calculated by HFA

**Details of sustainability rating**

Database ecoinvent

Lifecycle (Phases)	GWP [kg CO <sub>2</sub> -e.]	AP [kg SO <sub>2</sub> -e.]	EP [kg PO <sub>4</sub> -e.]	ODP [kg R11-e.]	POCP [kg Ethen-e.]	
A1 - A3		0.172	0.076	2,40E-6	0.045	

Lifecycle (Phases)	PERE [MJ]	PERM [MJ]	PERT [MJ]	PENRE [MJ]	PENRM [MJ]	PENRT [MJ]
A1 - A3	78.605	473.735	552.340	582.199	33.037	615.236