

Intermediate floor - gdrnxa05a-06

intermediate floor, timber frame construction, suspended, wet, without filling, other surface

Performance rating

Fire protection performance REI 30

maximum span = 5 m; maximum load $E_{d,fi} = 2,62 \text{ kN/m}^2$ (without floor construction and 12mm OSB; with ceiling beam 60/200)

Classified by IBS

Classified by HFA

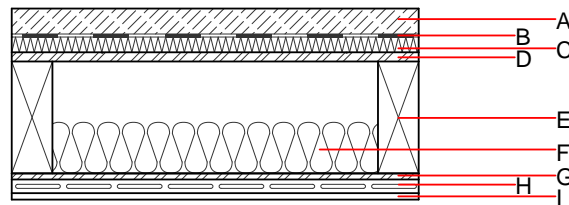
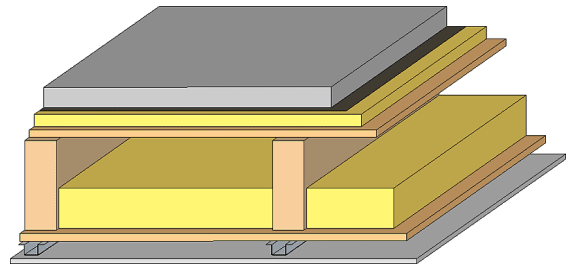
Thermal performance U Diffusion 0.27 $\text{W}/(\text{m}^2\text{K})$
suitable

Acoustic performance $R_w (C;C_{tr})$ 58(-2;-8) dB
 $L_{n,w} (C_i)$ 61(0)

Assessed by TGM

Mass per unit area m 151.10 kg/m^2

Calculation based on gypsum plaster board type DF



Register of building materials used for this application, cross-section (from outside to inside, dimensions in mm)

	Thickness	Building material	Thermal performance				Reaction to fire EN
			λ	μ min – max	ρ	c	
A	50.0	anhydrite screed	0.700	10	2200	1.300	A1
B		plastic separation layer	0.200	100000	1400	1.400	E
C	30.0	impact sound absorbing subflooring MW-T	0.035	1	68	1.030	A1
D	18.0	OSB	0.130	200	600	1.700	D
E	220.0	construction timber (80/...; e=625)	0.120	50	450	1.600	D
F	100.0	sheep wool [0,041; R=16]	0.041	1	16	1.720	E
G	12.0	OSB	0.130	200	600	1.700	D
H	27.0	resilient channel					
I	12.5	gypsum plaster board type DF or	0.250	10	800	1.050	A2
I	12.5	gypsum fibre board	0.320	21	1000	1.100	A2

Sustainability rating (per m^2)

Database ecoinvent

$OI3_{Kon}$ 37.8

Calculated by HFA

Details of sustainability rating

Database ecoinvent

Lifecycle (Phases)	GWP [kg CO ₂ -e.]	AP [kg SO ₂ -e.]	EP [kg PO ₄ -e.]	ODP [kg R11-e.]	POCP [kg Ethen-e.]	
A1 - A3		0.152	0.073	2,77E-6	0.029	

Lifecycle (Phases)	PERE [MJ]	PERM [MJ]	PERT [MJ]	PENRE [MJ]	PENRM [MJ]	PENRT [MJ]
A1 - A3	121.401	577.159	698.560	560.570	26.028	586.598