

Intermediate floor - gdrnxa05a-07

intermediate floor, timber frame construction, suspended, wet, without filling, other surface

Performance rating

Fire protection performance REI 30

maximum span = 5 m; maximum load $E_{d,fi} = 2,62 \text{ kN/m}^2$ (without floor construction and 12mm OSB; with ceiling beam 60/200)

Classified by IBS

Classified by HFA

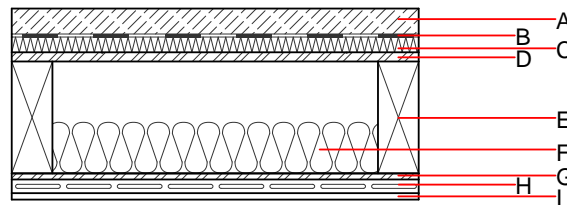
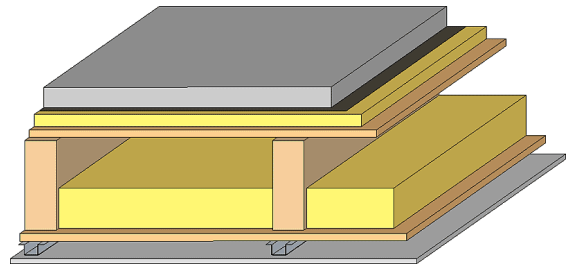
Thermal performance U Diffusion 0.27 W/(m²K) suitable

Acoustic performance R_w (C;C_{tr}) 58(-1;-7) dB
 $L_{n,w}$ (C_i) 63(0)

Assessed by TGM

Mass per unit area m 149.40 kg/m²

Calculation based on gypsum plaster board type DF



Register of building materials used for this application, cross-section (from outside to inside, dimensions in mm)

	Thickness	Building material	Thermal performance				Reaction to fire EN
			λ	μ min – max	ρ	c	
A	50.0	anhydrite screed	0.700	10	2200	1.300	A1
B		plastic separation layer	0.200	100000	1400	1.400	E
C	30.0	impact sound absorbing subflooring EPS-T	0.040	20 - 50	11	1.450	E
D	18.0	OSB	0.130	200	600	1.700	D
E	220.0	construction timber (80/...; e=625)	0.120	50	450	1.600	D
F	100.0	mineral wool [040; ≥16; <1000°C]	0.040	1	16	1.030	A1
G	12.0	OSB	0.130	200	600	1.700	D
H	27.0	resilient channel					
I	12.5	gypsum plaster board type DF or	0.250	10	800	1.050	A2
I	12.5	gypsum fibre board	0.320	21	1000	1.100	A2

Sustainability rating (per m²)

Database ecoinvent

013_{kon} 33.3

Calculated by HFA

Details of sustainability rating

Database ecoinvent

Lifecycle (Phases)	GWP [kg CO ₂ -e.]	AP [kg SO ₂ -e.]	EP [kg PO ₄ -e.]	ODP [kg R11-e.]	POCP [kg Ethen-e.]	
A1 - A3		0.135	0.064	2,26E-6	0.029	

Lifecycle (Phases)	PERE [MJ]	PERM [MJ]	PERT [MJ]	PENRE [MJ]	PENRM [MJ]	PENRT [MJ]
A1 - A3	118.420	523.630	642.050	491.992	38.704	530.696