

## Intermediate floor - gdrnxa07b-03

intermediate floor, timber frame construction, suspended, wet, with filling, other surface

### Performance rating

**Fire protection performance** REI 60

maximum span = 5 m; maximum load  $E_{d,fi} = 3,66 \text{ kN/m}^2$  (without floor construction; with ceiling beam 80/200)

Classified by IBS

Classified by HFA

**Thermal performance** U Diffusion 0.24 W/(m<sup>2</sup>K) suitable

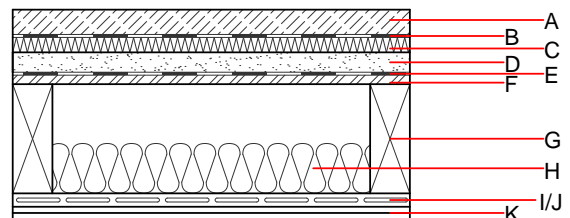
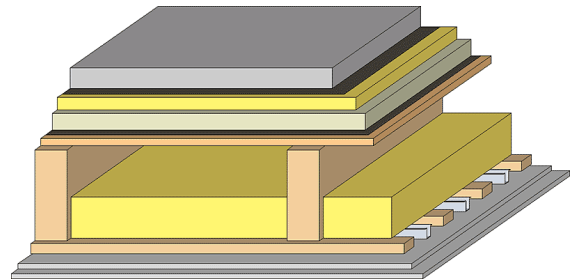
Calculated by HFA

**Acoustic performance**  $R_w$  (C;C<sub>tr</sub>) 70(0;-4) dB  
 $L_{n,w}$  (C<sub>i</sub>) 41(0)

Assessed by TGM

**Mass per unit area** m 227.40 kg/m<sup>2</sup>

Calculation based on gypsum plaster board type DF



### Register of building materials used for this application, cross-section (from outside to inside, dimensions in mm)

	Thickness	Building material	Thermal performance				Reaction to fire EN
			$\lambda$	$\mu$ min – max	$\rho$	c	
A	50.0	cement screed or anhydrite screed	1.330	50 - 100	2000	1.080	A1
B		plastic separation layer	0.200	100000	1400	1.400	E
C	30.0	impact sound absorbing subflooring MW-T [s' = 10 MN/m <sup>3</sup> ]	0.035	1	68	1.030	A1
D	40.0	fill loose	0.700	1	1800	1.000	A1
E		trickling protection					E
F	18.0	OSB	0.130	200	600	1.700	D
G	220.0	construction timber (80/...; e=625)	0.120	50	450	1.600	D
H	100.0	mineral wool [035; 50; <1000°C]	0.035	1	50	1.030	A1
I		spruce wood cladding with spacing of cladding boards(24/100); a=400	0.120	50	450	1.600	D
J	27.0	resilient channel placed between cladding with spacing	0.156				
K	25.0	gypsum plaster board type DF (2x...) or	0.250	10	800	1.050	A2
K	25.0	gypsum fibre board (2x...)	0.320	21	1000	1.100	A2

### Sustainability rating (per m<sup>2</sup>)

#### Database ecoinvent

OI3<sub>Kon</sub> 52.5

Calculated by HFA

## Details of sustainability rating

### Database ecoinvent

Lifecycle (Phases)	GWP [kg CO <sub>2</sub> -e.]	AP [kg SO <sub>2</sub> -e.]	EP [kg PO <sub>4</sub> -e.]	ODP [kg R11-e.]	POCP [kg Ethen-e.]	
A1 - A3		0.205	0.098	3,69E-6	0.033	

Lifecycle (Phases)	PERE [MJ]	PERM [MJ]	PERT [MJ]	PENRE [MJ]	PENRM [MJ]	PENRT [MJ]
A1 - A3	116.186	455.553	571.739	715.825	20.654	736.478