

Intermediate floor - gdrnxa08b-06

intermediate floor, timber frame construction, suspended, wet, with filling, other surface

Performance rating

Fire protection performance REI 60

maximum span = 5 m; maximum load $E_{d,fi} = 3,66 \text{ kN/m}^2$
Classified by HFA

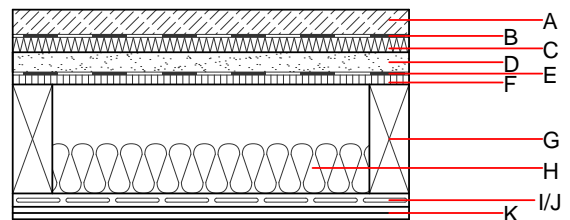
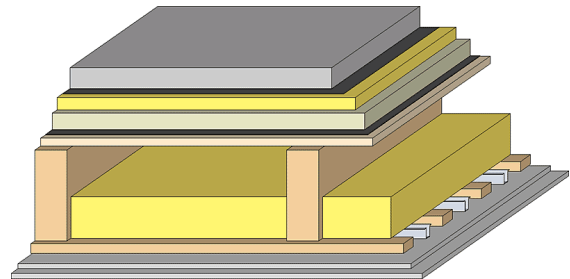
Thermal performance U Diffusion 0.27 W/(m²K)
suitable

energy storage capacity per unit area above: 103,9 kg/m²
Calculated by HFA

Acoustic performance $R_w (C; C_{tr})$ 70(-1;-6) dB
 $L_{n,w} (C_i)$ 41(0)

Mass per unit area m 226.00 kg/m²

Calculation based on gypsum plaster board type DF



Note: e=625;

Register of building materials used for this application, cross-section (from outside to inside, dimensions in mm)

	Thickness	Building material	Thermal performance				Reaction to fire EN
			λ	$\mu \text{ min} - \text{max}$	ρ	c	
A	50.0	cement screed or anhydrite screed	1.330	50 - 100	2000	1.080	A1
B		plastic separation layer	0.200	100000	1400	1.400	E
C	30.0	impact sound absorbing subflooring MW-T [$s' = 10 \text{ MN/m}^3$]	0.035	1	68	1.030	A1
D	40.0	fill	0.700	1	1800	1.000	A1
E		trickling protection					E
F	19.0	particleboard	0.130	50 - 100	700	1.700	D
G	220.0	construction timber (80/...; e=*)	0.120	50	450	1.600	D
H	100.0	sheep wool [0,041; R=16]	0.041	1	16	1.720	E
I	24.0	spruce wood cladding with spacing of cladding boards(24/100); a=400	0.120	50	450	1.600	D
J	27.0	resilient channel placed between cladding with spacing	0.156				
K	25.0	gypsum plaster board type DF (2x12,5 mm) or	0.250	10	800	1.050	A2
K	25.0	gypsum fibre board (2x12,5 mm)	0.320	21	1000	1.100	A2

Sustainability rating (per m²)

Database ecoinvent

013_{Kon} 39.3

Calculated by HFA

Details of sustainability rating

Database ecoinvent

Lifecycle (Phases)	GWP [kg CO ₂ -e.]	AP [kg SO ₂ -e.]	EP [kg PO ₄ -e.]	ODP [kg R11-e.]	POCP [kg Ethen-e.]	
A1 - A3		0.146	0.071	2,70E-6	0.030	

Lifecycle (Phases)	PERE [MJ]	PERM [MJ]	PERT [MJ]	PENRE [MJ]	PENRM [MJ]	PENRT [MJ]
A1 - A3	79.387	505.853	585.240	589.442	37.173	626.616