

Intermediate floor - gdrta03a-03

intermediate floor, timber frame construction, suspended, dry, without filling, other surface

Performance rating

Fire protection performance REI 30

maximum span = 5 m; maximum load $E_{d,fi} = 3,66 \text{ kN/m}^2$
Classified by HFA

Thermal performance U Diffusion 0.25 $\text{W/(m}^2\text{K)}$
suitable

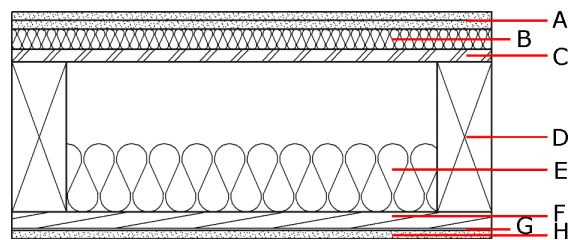
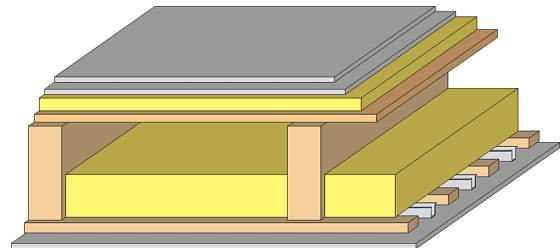
Calculated by HFA

Acoustic performance $R_w (C; C_{tr})$ 63(-2;-9) dB
 $L_{n,w} (C_i)$ 52(4)

Assessed by TGM

Mass per unit area m 65.30 kg/m^2

Calculation based on GF



Note: $e=625$;

Register of building materials used for this application, cross-section (from outside to inside, dimensions in mm)

	Thickness	Building material	Thermal performance				Reaction to fire EN
			λ	μ min – max	ρ	c	
A	25.0	dry screed	0.210	8	900	1.050	A1
B	30.0	impact sound absorbing subflooring MW-T	0.035	1	68	1.030	A1
C	18.0	OSB	0.130	200	600	1.700	D
D	220.0	construction timber (80/...; $e=*$)	0.120	50	450	1.600	D
E	100.0	mineral wool [035; 50; <1000°C]	0.035	1	50	1.030	A1
F	24.0	spruce wood cladding with spacing of cladding boards(24/100); $a=400$	0.120	50	450	1.600	D
G	27.0	resilient channel (placed between open formwork)	0.156				
H	12.5	gypsum plaster board type DF or	0.250	10	800	1.050	A2
H	12.5	gypsum fibre board	0.320	21	1000	1.100	A2

Sustainability rating (per m^2)

Database ecoinvent

013_{Kon} 42.7

Calculated by HFA

Details of sustainability rating

Database ecoinvent

Lifecycle (Phases)	GWP [kg CO ₂ -e.]	AP [kg SO ₂ -e.]	EP [kg PO ₄ -e.]	ODP [kg R11-e.]	POCP [kg Ethen-e.]	
A1 - A3		0.181	0.072	2,97E-6	0.043	
Lifecycle (Phases)	PERE [MJ]	PERM [MJ]	PERT [MJ]	PENRE [MJ]	PENRM [MJ]	PENRT [MJ]
A1 - A3	95.871	406.419	502.290	568.260	16.832	585.091