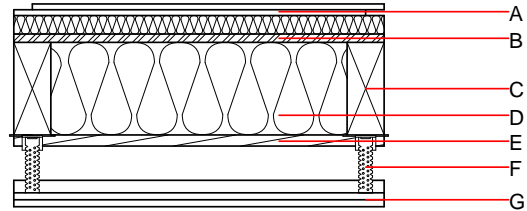


Intermediate floor - gdrxa04b-00

intermediate floor, timber frame construction, suspended, dry, without filling, other surface

Performance rating

Fire protection performance	REI	90
maximum span = 5 m; maximum load $E_{d,fi}$ = 2,6 kN/m ² Classified by HFA		
Thermal performance	U Diffusion	0.16 W/(m ² K)
Calculated by IBO		
Acoustic performance	R_w (C;C _{tr}) $L_{n,w}$ (C _i)	76(-5;-13) dB 43(1)
Assessed by HFA		
Mass per unit area	m	91.60 kg/m ²



Register of building materials used for this application, cross-section (from outside to inside, dimensions in mm)

	Thickness	Building material	Thermal performance				Reaction to fire EN
			λ	μ min – max	ρ	c	
A	65.0	Rigidur flooring element 65 MW					A2
B	18.0	OSB	0.130	200	600	1.700	D
C	200.0	construction timber (80/...; e=625)	0.120	50	450	1.600	D
D	200.0	ISOVER Ultimate	0.035	1	20	1.030	A1
E	24.0	spruce wood open formwork (24/100, a=400)	0.120	50	450	1.600	D
F	60.0	Rigips acoustic direct hanger Sylomer (decoupled)					
G	30.0	Rigips Riduro 2x15mm	0.250	4 - 10	1000	1.050	A2

Sustainability rating (per m²)

Database ecoinvent

$OI3_{Kon}$ 55.7

Calculated by IBO

Details of sustainability rating

Database ecoinvent

Lifecycle (Phases)	GWP [kg CO ₂ -e.]	AP [kg SO ₂ -e.]	EP [kg PO ₄ -e.]	ODP [kg R11-e.]	POCP [kg Ethen-e.]	
A1 - A3		0.229	0.097	4.64E-6	0.033	

Lifecycle (Phases)	PERE [MJ]	PERM [MJ]	PERT [MJ]	PENRE [MJ]	PENRM [MJ]	PENRT [MJ]
A1 - A3	205.811	463.390	669.201	774.830	15.361	790.191