

## Intermediate floor - gdrtn01b-05

intermediate floor, timber frame construction, not suspended, dry, with filling, other surface

### Performance rating

**Fire protection performance** REI 60

maximum span = 5 m; maximum load  $E_{d,fi} = 3,66 \text{ kN/m}^2$   
 Classified by HFA

**Thermal performance** U 0.26 W/(m<sup>2</sup>K)  
 Diffusion suitable

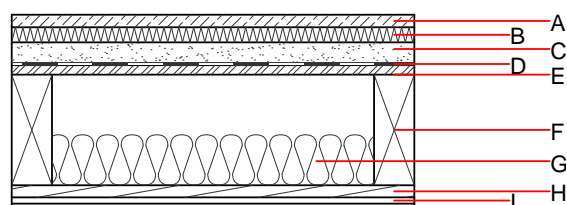
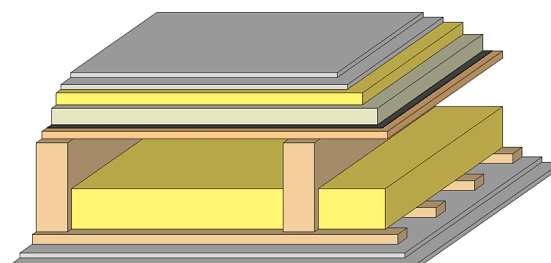
Calculated by HFA

**Acoustic performance**  $R_w (C; C_{tr})$  63(-4;-11) dB  
 $L_{n,w} (C_i)$  58(0)

Assessed by TGM

**Mass per unit area** m 147.70 kg/m<sup>2</sup>

Calculation based on GF



Note: e=625;

### Register of building materials used for this application, cross-section (from outside to inside, dimensions in mm)

	Thickness	Building material	Thermal performance				Reaction to fire EN
			$\lambda$	$\mu$ min – max	$\rho$	c	
A	25.0	dry screed	0.210	8	900	1.050	A1
B	30.0	impact sound absorbing subflooring MW-T	0.035	1	68	1.030	A1
C	40.0	fill	0.700	1	1800	1.000	A1
D		trickling protection					E
E	18.0	OSB	0.130	200	600	1.700	D
F	220.0	construction timber (80/...; e=*)	0.120	50	450	1.600	D
G	100.0	cellulose fibre [040; E]	0.040	1 - 2	55	2.000	E
H	24.0	spruce wood cladding with spacing of cladding boards(24/100); a=400	0.120	50	450	1.600	D
I	25.0	gypsum plaster board type DF (2x12,5 mm) or	0.250	10	800	1.050	A2
I	25.0	gypsum fibre board (2x12,5 mm)	0.320	21	1000	1.100	A2

### Sustainability rating (per m<sup>2</sup>)

#### Database ecoinvent

OI3<sub>Kon</sub> 26.7

Calculated by HFA

## Details of sustainability rating

### Database ecoinvent

Lifecycle (Phases)	GWP [kg CO <sub>2</sub> -e.]	AP [kg SO <sub>2</sub> -e.]	EP [kg PO <sub>4</sub> -e.]	ODP [kg R11-e.]	POCP [kg Ethen-e.]	
A1 - A3		0.117	0.050	2,59E-6	0.021	
Lifecycle (Phases)	PERE [MJ]	PERM [MJ]	PERT [MJ]	PENRE [MJ]	PENRM [MJ]	PENRT [MJ]
A1 - A3	101.366	499.012	600.378	436.654	16.832	453.486