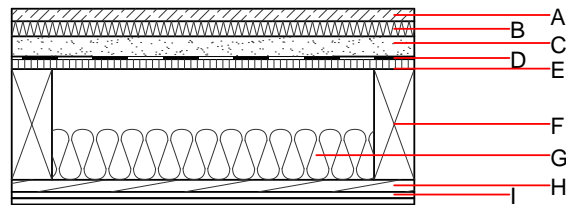
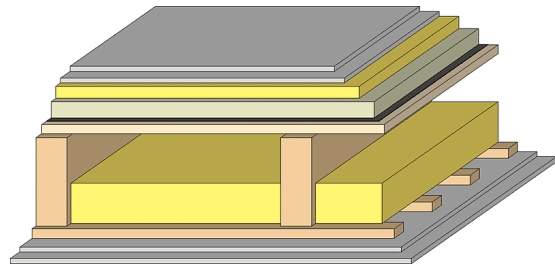


Intermediate floor - gdrtn02b-05

intermediate floor, timber frame construction, not suspended, dry, with filling, other surface

Performance rating

Fire protection performance	REI	60
maximum span = 5 m; maximum load $E_{d,fi} = 3,66 \text{ kN/m}^2$ Classified by HFA		
Thermal performance	U Diffusion	0.26 $\text{W}/(\text{m}^2\text{K})$ suitable
Calculated by HFA		
Acoustic performance	$R_w (C;C_{tr})$ $L_{n,w} (C_i)$	63(-4;-11) dB 58(0)
Assessed by TGM		
Mass per unit area	m	149.30 kg/m^2
Calculation based on GF		



Note: e=625;

Register of building materials used for this application, cross-section (from outside to inside, dimensions in mm)

	Thickness	Building material	Thermal performance				Reaction to fire EN
			λ	μ min - max	ρ	c	
A	25.0	dry screed	0.210	8	900	1.050	A1
B	30.0	impact sound absorbing subflooring MW-T	0.035	1	68	1.030	A1
C	40.0	fill	0.700	1	1800	1.000	A1
D		trickling protection					E
E	19.0	particleboard	0.130	50 - 100	700	1.700	D
F	220.0	construction timber (80/...; e=*)	0.120	50	450	1.600	D
G	100.0	cellulose fibre [040; E]	0.040	1 - 2	55	2.000	E
H	24.0	spruce wood cladding with spacing of cladding boards(24/100); a=400	0.120	50	450	1.600	D
I	25.0	gypsum plaster board type DF (2x12,5 mm) or	0.250	10	800	1.050	A2
I	25.0	gypsum fibre board (2x12,5 mm)	0.320	21	1000	1.100	A2

Sustainability rating (per m^2)

Database ecoinvent

$OI3_{kon}$ 28.7

Calculated by HFA

Details of sustainability rating

Database ecoinvent

Lifecycle (Phases)	GWP [kg CO ₂ -e.]	AP [kg SO ₂ -e.]	EP [kg PO ₄ -e.]	ODP [kg R11-e.]	POCP [kg Ethen-e.]	
A1 - A3		0.117	0.051	2,53E-6	0.023	

Lifecycle (Phases)	PERE [MJ]	PERM [MJ]	PERT [MJ]	PENRE [MJ]	PENRM [MJ]	PENRT [MJ]
A1 - A3	72.821	517.194	590.015	479.640	33.037	512.678