

Intermediate floor - gdrtn03b-08

intermediate floor, timber frame construction, not suspended, dry, without filling, other surface

Performance rating

Fire protection performance REI 60

maximum span = 5 m; maximum load $E_{d,fi} = 3,66 \text{ kN/m}^2$
 Classified by HFA

Thermal performance U 0.27 W/(m²K)
Diffusion suitable

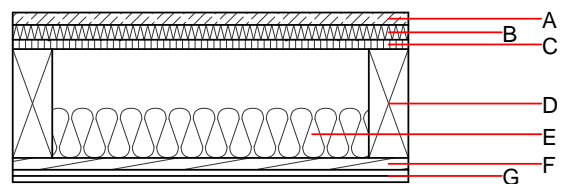
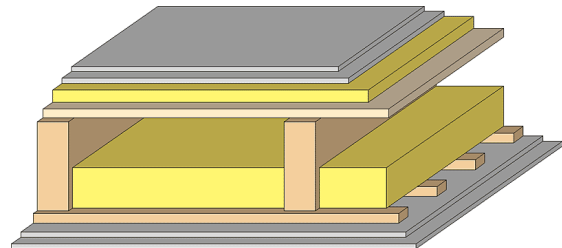
Calculated by HFA

Acoustic performance $R_w (C;C_{tr})$ 49(-3;-10) dB
 $L_{n,w} (C_i)$ 69(0)

Assessed by TGM

Mass per unit area m 81.70 kg/m²

Calculation based on GF



Note: e=400;

Register of building materials used for this application, cross-section (from outside to inside, dimensions in mm)

	Thickness	Building material	Thermal performance				Reaction to fire EN
			λ	μ min - max	ρ	c	
A	25.0	dry screed	0.210	8	900	1.050	A1
B	30.0	impact sound absorbing subflooring MW-T	0.035	1	68	1.030	A1
C	19.0	particleboard	0.130	50 - 100	700	1.700	D
D	220.0	construction timber (80/...; e=*)	0.120	50	450	1.600	D
E	100.0	mineral wool [040; ≥ 16 ; <1000°C]	0.040	1	16	1.030	A1
F	24.0	spruce wood cladding with spacing of cladding boards(24/100); a=400	0.120	50	450	1.600	D
G	25.0	gypsum plaster board type DF (2x12,5 mm) or	0.250	10	800	1.050	A2
G	25.0	gypsum fibre board (2x12,5 mm)	0.320	21	1000	1.100	A2

Sustainability rating (per m²)

Database ecoinvent

OI3_{Kon} 31.0

Calculated by HFA

Details of sustainability rating

Database ecoinvent

Lifecycle (Phases)	GWP [kg CO ₂ -e.]	AP [kg SO ₂ -e.]	EP [kg PO ₄ -e.]	ODP [kg R11-e.]	POCP [kg Ethen-e.]	
A1 - A3		0.130	0.058	2,81E-6	0.028	

Lifecycle (Phases)	PERE [MJ]	PERM [MJ]	PERT [MJ]	PENRE [MJ]	PENRM [MJ]	PENRT [MJ]
A1 - A3	94.276	603.449	697.725	532.333	29.215	561.548