

## Internal wall - iwrxxo01b-05

internal wall, timber frame construction, without dry lining, other surface

### Performance rating

**Fire protection performance** REI 60

maximum ceiling height = 3 m; maximum load  $E_{d,fi} = 50,0 \text{ kN/m}$

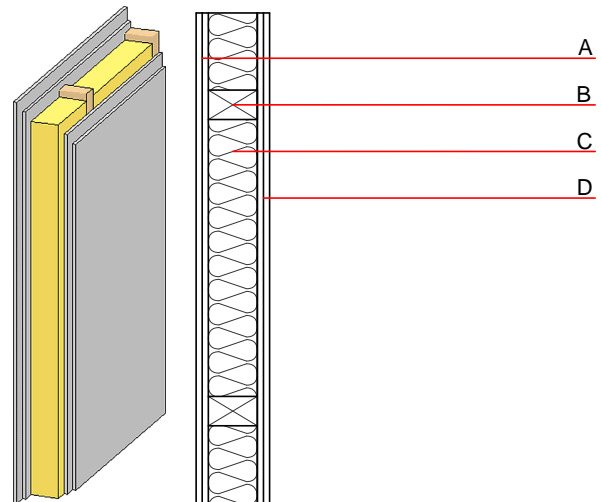
Classified by MA39

Classified by HFA

**Acoustic performance**  $R_w (C; C_{tr})$   
 $L_{n,w} (C_i)$

**Mass per unit area** m 45.50 kg/m<sup>2</sup>

Calculation based on GF



**Note:** The fire resistance is only valid when wall is used as partition with only one side exposed to fire.  
 (B=60/100); e=625

### Register of building materials used for this application, cross-section (from outside to inside, dimensions in mm)

	Thickness	Building material	Thermal performance				Reaction to fire EN
			$\lambda$	$\mu \text{ min} - \text{max}$	$\rho$	c	
A	25.0	gypsum plaster board type DF (2x12,5 mm) or	0.250	10	800	1.050	A2
A	25.0	gypsum fibre board (2x12,5 mm)	0.320	21	1000	1.100	A2
B	100.0	construction timber (60/100 or 60/160; e=*)	0.120	50	450	1.600	D
C	100.0	sheep wool [0,041; R=16]	0.041	1	16	1.720	E
D	25.0	gypsum plaster board type DF (2x12,5 mm) or	0.250	10	800	1.050	A2
D	25.0	gypsum fibre board (2x12,5 mm)	0.320	21	1000	1.100	A2

### Sustainability rating (per m<sup>2</sup>)

#### Database ecoinvent

OI3<sub>Kon</sub> 11.5

Calculated by HFA

## Details of sustainability rating

### Database ecoinvent

Lifecycle (Phases)	GWP [kg CO <sub>2</sub> -e.]	AP [kg SO <sub>2</sub> -e.]	EP [kg PO <sub>4</sub> -e.]	ODP [kg R11-e.]	POCP [kg Ethen-e.]	
A1 - A3		0.033	0.016	1,39E-6	0.006	

Lifecycle (Phases)	PERE [MJ]	PERM [MJ]	PERT [MJ]	PENRE [MJ]	PENRM [MJ]	PENRT [MJ]
A1 - A3	23.145	111.911	135.056	200.768	0.325	201.094