

Internal wall - iwrxxo06a-05

internal wall, timber frame construction, without dry lining, other surface

Performance rating

Fire protection performance REI 60

maximum ceiling height = 3 m; maximum load $E_{d,fi}$ = 19,2 kN/m

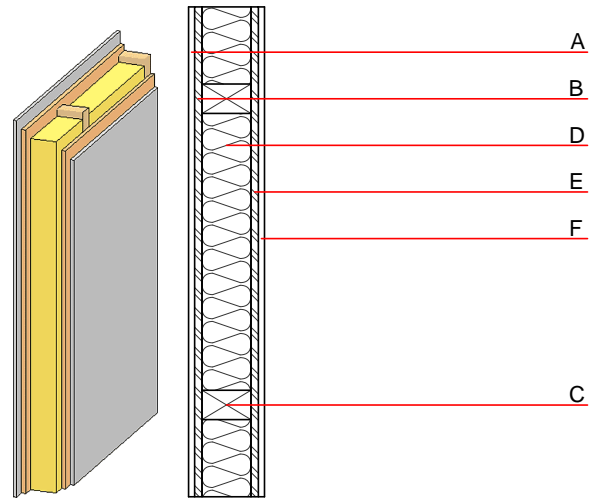
Classified by MA39

Classified by HFA

Acoustic performance R_w (C ; C_{tr})
 $L_{n,w}$ (C_i)

Mass per unit area m 45.00 kg/m²

Calculation based on GF



Note: The fire resistance is only valid when wall is used as partition with only one side exposed to fire.
 (C=60/100); e=625

Register of building materials used for this application, cross-section (from outside to inside, dimensions in mm)

	Thickness	Building material	Thermal performance				Reaction to fire EN
			λ	μ min – max	ρ	c	
A	12.5	gypsum fibre board or	0.320	21	1000	1.100	A2
A	12.5	gypsum plaster board type DF	0.250	10	800	1.050	A2
B	15.0	OSB	0.130	200	600	1.700	D
C	100.0	construction timber (60/100 or 60/160; e=*)	0.120	50	450	1.600	D
D	100.0	sheep wool [0,041; R=16]	0.041	1	16	1.720	E
E	15.0	OSB	0.130	200	600	1.700	D
F	12.5	gypsum fibre board or	0.320	21	1000	1.100	A2
F	12.5	gypsum plaster board type DF	0.250	10	800	1.050	A2

Sustainability rating (per m²)

Database ecoinvent

O13_{Kon} 13.6

Calculated by HFA

Details of sustainability rating

Database ecoinvent

Lifecycle (Phases)	GWP [kg CO ₂ -e.]	AP [kg SO ₂ -e.]	EP [kg PO ₄ -e.]	ODP [kg R11-e.]	POCP [kg Ethen-e.]	
A1 - A3		0.060	0.025	1,48E-6	0.013	
Lifecycle (Phases)	PERE [MJ]	PERM [MJ]	PERT [MJ]	PENRE [MJ]	PENRM [MJ]	PENRT [MJ]
A1 - A3	76.178	404.938	481.116	256.463	22.008	278.471