

Pitched roof - sdrhzi09a-01

pitched roof, timber frame construction, ventilated, with dry lining, not suspended, other surface

Performance rating

Fire protection performance REI 30

maximum span = 5 m; maximum load $E_{d,fi} = 2,62 \text{ kN/m}^2$ (rafter 60/200 without roofing, counter battens and battens)

Classified by IBS

Classified by HFA

Thermal performance U Diffusion 0.19 W/(m²K)
suitable

Calculated by HFA

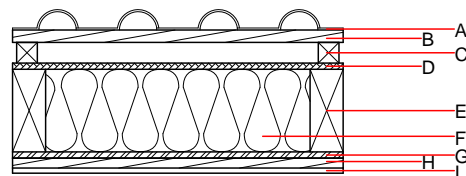
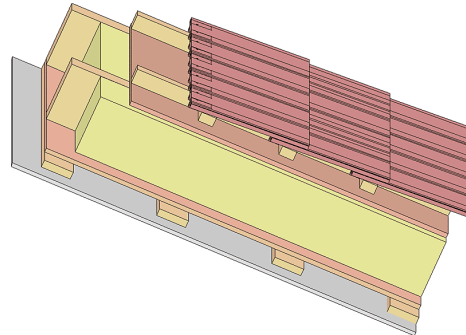
Acoustic performance $R_w (C; C_{tr})$ 52(-1;-7) dB
 $L_{n,w} (C_i)$

with a tiled roof $R_w = 50 (-1; -7) \text{ dB}$

Assessed by TGM

Mass per unit area m 45.90 kg/m²

Calculation based on gypsum plaster board type DF



Note: The design of the under-roof construction and of the counter-battens have to be specified according to the roof pitch and the national requirements.

Register of building materials used for this application, cross-section (from outside to inside, dimensions in mm)

	Thickness	Building material	Thermal performance				Reaction to fire EN
			λ	$\mu \text{ min} - \text{max}$	ρ	c	
A		concrete roof tile or tiled roof			2100		A1
B	30.0	spruce wood battens (30/50)	0.120	50	450	1.600	D
C	50.0	spruce wood counter battens (Austria: minimum height 50 mm), Germany 30 mm	0.120	50	450	1.600	D
D	15.0	fibreboard (MDF)	0.140	11	600	1.700	D
E	220.0	construction timber (80/...; e=625)	0.120	50	450	1.600	D
F	220.0	mineral wool [040; ≥ 16 ; <1000°C]	0.040	1	16	1.030	A1
G	15.0	OSB (sealed with airtight tape)	0.130	200	600	1.700	D
H	24.0	spruce wood cladding with spacing of cladding boards(24/100); a=400	0.120	50	450	1.600	D
I	12.5	gypsum plaster board type DF or	0.250	10	800	1.050	A2
I	12.5	gypsum fibre board	0.320	21	1000	1.100	A2

Sustainability rating (per m²)

Database ecoinvent

OL3_{Kon} 29.6

Calculated by HFA

Details of sustainability rating

Database ecoinvent

Lifecycle (Phases)	GWP [kg CO ₂ -e.]	AP [kg SO ₂ -e.]	EP [kg PO ₄ -e.]	ODP [kg R11-e.]	POCP [kg Ethen-e.]	
A1 - A3		0.131	0.059	2,80E-6	0.024	

Lifecycle (Phases)	PERE [MJ]	PERM [MJ]	PERT [MJ]	PENRE [MJ]	PENRM [MJ]	PENRT [MJ]
A1 - A3	104.059	606.061	710.120	471.972	28.891	500.864