

Pitched roof - sdrhzo02b-05

pitched roof, timber frame construction, ventilated, without dry lining, directly, other surface

Performance rating

Fire protection performance REI 60

maximum span = 5 m; maximum load $E_{d,fi} = 3,66 \text{ kN/m}^2$
Classified by HFA

Thermal performance U 0.22 W/(m²K)
Diffusion suitable

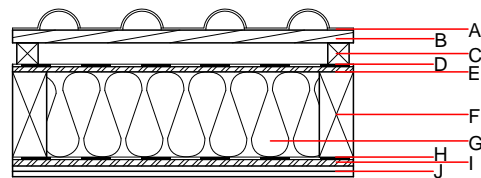
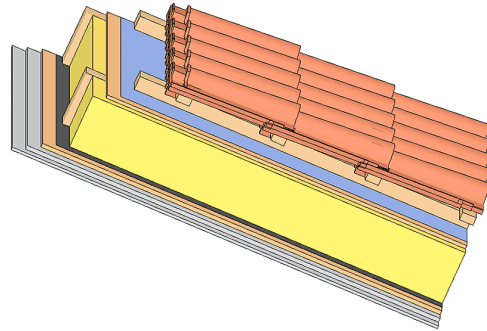
Calculated by HFA

Acoustic performance $R_w (C; C_{tr})$ 52(-2;-8) dB
 $L_{n,w} (C_i)$

with a tiled roof $R_w = 50 (-2; -8) \text{ dB}$
Assessed by TGM

Mass per unit area m 58.00 kg/m²

Calculation based on gypsum plaster board type DF



Note: The design of the under-roof construction and of the counter-battens have to be specified according to the roof pitch and the national requirements.

Register of building materials used for this application, cross-section (from outside to inside, dimensions in mm)

	Thickness	Building material	Thermal performance				Reaction to fire EN
			λ	$\mu \text{ min} - \text{max}$	ρ	c	
A		concrete roof tile or tiled roof			2100		A1
B	30.0	spruce wood battens (30/50)	0.120	50	450	1.600	D
C	50.0	spruce wood counter battens (minimum height 50 mm)	0.120	50	450	1.600	D
D		sarking membrane $s_d \leq 0,3\text{m}$			1000		E
E	12.0	OSB	0.130	200	600	1.700	D
F	200.0	construction timber (80/...; e=800)	0.120	50	450	1.600	D
G	200.0	cellulose fibre [040; E]	0.040	1 - 2	55	2.000	E
H		vapour barrier $s_d \geq 11\text{m}$			1000		
I	15.0	OSB	0.130	200	600	1.700	D
J	25.0	gypsum plaster board type DF (2x12,5 mm) or	0.250	10	800	1.050	A2
J	25.0	gypsum fibre board (2x12,5 mm)	0.320	21	1000	1.100	A2

Sustainability rating (per m²)

Database ecoinvent

013_{Kon} 24.8

Calculated by HFA

Details of sustainability rating

Database ecoinvent

Lifecycle (Phases)	GWP [kg CO ₂ -e.]	AP [kg SO ₂ -e.]	EP [kg PO ₄ -e.]	ODP [kg R11-e.]	POCP [kg Ethen-e.]	
A1 - A3		0.114	0.050	2,69E-6	0.021	

Lifecycle (Phases)	PERE [MJ]	PERM [MJ]	PERT [MJ]	PENRE [MJ]	PENRM [MJ]	PENRT [MJ]
A1 - A3	110.288	611.546	721.833	411.018	25.917	436.935