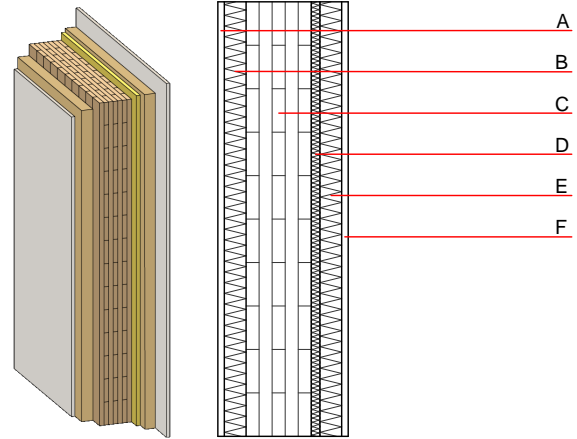


### Compartment wall - twmxxo01-00

compartment wall, solid wood construction, without dry lining, single-layer, other surface

#### Performance rating

<b>Fire protection performance</b>	REI	90
maximum ceiling height = 3 m; maximum load $E_{d,fi} = 35,0 \text{ kN/m}$ Classified by MA39		
<b>Thermal performance</b>	U	0.33 $\text{W}/(\text{m}^2\text{K})$
	Diffusion	suitable
Calculated by HFA		
<b>Acoustic performance</b>	$R_w (C;C_{tr})$	60(-3;-9) dB
	$L_{n,w} (C_i)$	
Assessed by TGM		
<b>Mass per unit area</b>	m	165.40 $\text{kg}/\text{m}^2$



#### Register of building materials used for this application, cross-section (from outside to inside, dimensions in mm)

	Thickness	Building material	Thermal performance				Reaction to fire EN
			$\lambda$	$\mu \text{ min - max}$	$\rho$	c	
A	15.0	plaster	0.700	10	1300	1.000	A1
B	50.0	Heraklith BM	0.090	2 - 5	370	2.000	B
C	140.0	solid glued wood	0.130	50	500	1.600	D
D	20.0	Heralan TP 25/20	0.035	1	105	1.030	A1
E	50.0	Heraklith BM	0.090	2 - 5	370	2.000	B
F	15.0	plaster	0.700	10	1300	1.000	A1

#### Sustainability rating (per $\text{m}^2$ )

##### Database ecoinvent

$013_{kon}$  43.4

Calculated by HFA

#### Details of sustainability rating

##### Database ecoinvent

Lifecycle (Phases)	GWP [kg $\text{CO}_2\text{-e.}$ ]	AP [kg $\text{SO}_2\text{-e.}$ ]	EP [kg $\text{PO}_4\text{-e.}$ ]	ODP [kg R11-e.]	POCP [kg Ethen-e.]	
A1 - A3		0.221	0.084	4,03E-6	0.067	
Lifecycle (Phases)	PERE [MJ]	PERM [MJ]	PERT [MJ]	PENRE [MJ]	PENRM [MJ]	PENRT [MJ]
A1 - A3	70.470	1157.688	1228.158	739.346	24.053	763.398