

Compartment wall - twmxxo07b-01

compartment wall, solid wood construction, without dry lining, double-layer, other surface

Performance rating

Fire protection performance REI 60
applies for each of the load-bearing walls; for the overall structure EI 90;
maximum ceiling height = 3 m; maximum load $E_{d,fi}$ = 35,0 kN/m
Classified by HFA

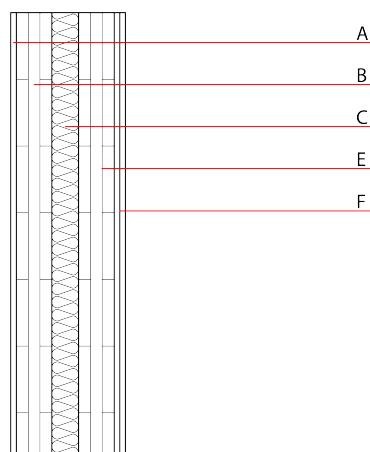
Thermal performance U 0.28 W/(m²K)
Diffusion suitable

Calculated by HFA

Acoustic performance R_w (C;C_{tr}) 64(-4;-10) dB
 $L_{n,w}$ (C_i)

frequency range 50-3500: C₅₀₋₃₅₀₀ -6 dB; C_{tr 50-3500} -17 dB
Assessed by HFA

Mass per unit area m 121.40 kg/m²



Note: Cross laminated timber

Var. 00-01: thickness ≥ 78mm; 3-ply at least, surface layer at least 25mm

Var. 02: thickness ≥ 94,0mm; 3-ply at least, surface layer at least 30mm

A and F: 2x12,5mm gypsum fibre board or gypsum plaster board type DF

Register of building materials used for this application, cross-section (from outside to inside, dimensions in mm)

	Thickness	Building material	Thermal performance				Reaction to fire EN
			λ	μ min – max	ρ	c	
A	25.0	gypsum plaster board type DF	0.250	10	800	1.050	A2
A	25.0	gypsum fibre board	0.320	21	1000	1.100	A2
B	80.0	cross laminated timber 3-ply	0.130	50	500	1.600	D
C	80.0	60 mm mineral wool [035; 90; ≥1000°C] + 20 mm air layer	0.035	1	90	1.030	A1
E	80.0	cross laminated timber 3-ply	0.130	50	500	1.600	D
F	25.0	gypsum plaster board type DF (2x12,5) or	0.250	10	800	1.050	A2
F	25.0	gypsum fibre board (2x12,5)	0.320	21	1000	1.100	A2

Sustainability rating (per m²)

Database ecoinvent

013_{Kon} 51.3

Calculated by HFA

Details of sustainability rating

Database ecoinvent

Lifecycle (Phases)	GWP [kg CO ₂ -e.]	AP [kg SO ₂ -e.]	EP [kg PO ₄ -e.]	ODP [kg R11-e.]	POCP [kg Ethen-e.]	
A1 - A3		0.257	0.097	4,30E-6	0.090	

Lifecycle (Phases)	PERE [MJ]	PERM [MJ]	PERT [MJ]	PENRE [MJ]	PENRM [MJ]	PENRT [MJ]
A1 - A3	53.198	1094.400	1147.598	813.777	27.489	841.266