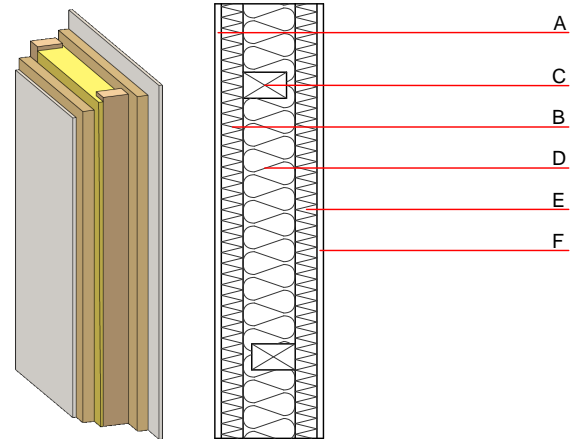


Compartment wall - twrxo01-00

compartment wall, timber frame construction, without dry lining, single-layer, other surface

Performance rating

Fire protection performance	REI	60
maximum ceiling height = 3 m; maximum load $E_{d,fi}$ = 19,2 kN/m Classified by MA39		
Thermal performance	U Diffusion	0.25 W/(m ² K) suitable
Calculated by HFA		
Acoustic performance	R_w (C;C _{tr}) $L_{n,w}$ (C _i)	60(-1;-6) dB
Assessed by TGM		
Mass per unit area	m	82.40 kg/m ²



Register of building materials used for this application, cross-section (from outside to inside, dimensions in mm)

	Thickness	Building material	Thermal performance				Reaction to fire EN
			λ	μ min – max	ρ	c	
A	15.0	plaster	0.700	10	1300	1.000	A1
B	50.0	Heraklith BM	0.090	2 - 5	370	2.000	B
C		construction timber (60/100; e=625)	0.120	50	450	1.600	D
D	120.0	Heralan KP	0.040	1	28	1.030	A1
E	50.0	Heraklith BM	0.090	2 - 5	370	2.000	B
F	15.0	plaster	0.700	10	1300	1.000	A1

Sustainability rating (per m²)

Database ecoinvent

$OI3_{kon}$ 23.1

Calculated by HFA

Details of sustainability rating

Database ecoinvent

Lifecycle (Phases)	GWP [kg CO ₂ -e.]	AP [kg SO ₂ -e.]	EP [kg PO ₄ -e.]	ODP [kg R11-e.]	POCP [kg Ethen-e.]	
A1 - A3		0.096	0.031	1,76E-6	0.025	
Lifecycle (Phases)	PERE [MJ]	PERM [MJ]	PERT [MJ]	PENRE [MJ]	PENRM [MJ]	PENRT [MJ]
A1 - A3	51.449	286.564	338.013	314.177	0.000	314.177